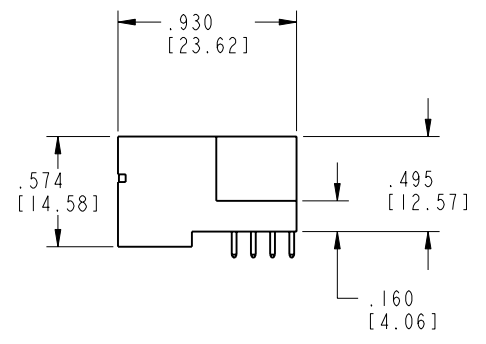
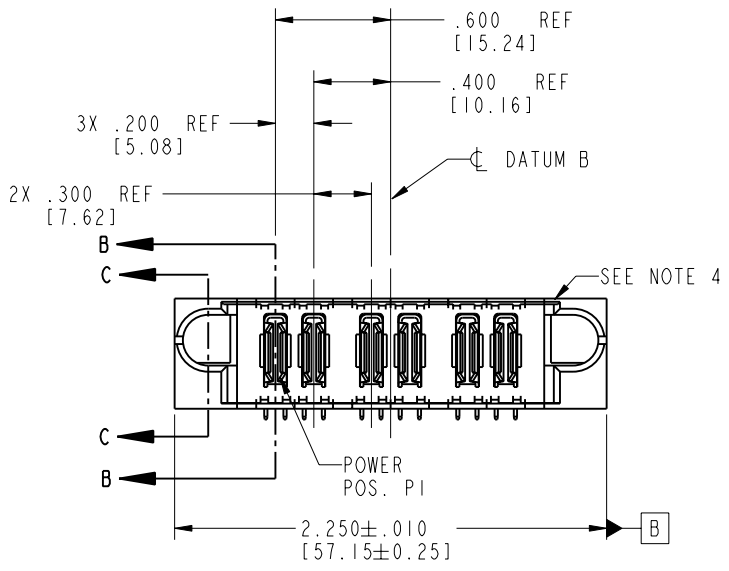
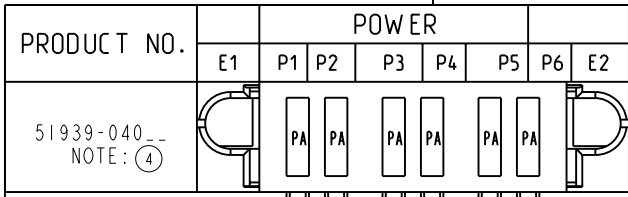


Tous droits strictement réservés. Reproduction ou communication o des liens interdite sous quelque forme que ce soit sans autorisation écrite du propriétaire. Propriété de c FCI. Droits de reproduction FCI.

All rights strictly reserved. Reproduction or issue to third parties in any form, whomever is not permitted without written authority from the proprietor. Property of FCI. Copyright FCI.



CODE	DIM "M" MATING LENGTH	CONTACT TYPE
PA	N/A [N/A]	POWER

mat'l code SEE NOTE 2				tolerances unless otherwise specified		CUSTOMER		 www.fciconnect.com		
ltr	ecn no.	dr	date	linear	.XX±.01/0.X±0.3	COPY		 INCH/MM	title	
A	V03-0066	MEM	1/15/03		.XXX±.005/0.XX±0.13	6P			RIGHT ANGLE SOLDER HEADER	
B	DG05-0258	SJ	07/29/05		.XXX±.0020/0.XXX±0.051	product family				code
C	DG06-0008	JMG	01/07/06		angles 0°±	PwrBlade				213
				dr	M. MOSTOLLER	1/15/03	scale		size	
				engr	M. MOSTOLLER	1/15/03	1:1		dwg no	
				chr	H. BREWBAKER	1/15/03	A		51939-040	
				appd	M. MOSTOLLER	1/15/03			sheet	
sheet index		revision sheet	C C	C C			cage code		1 of 4	
		1 2	3 4				22526		4	

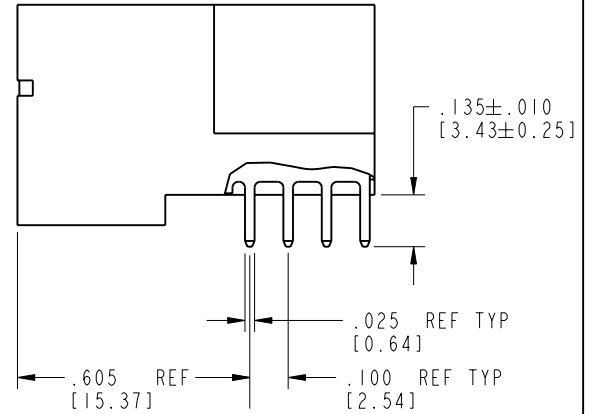
Pro/E 3 | cage code 22526 4

Tous droits strictement reserves. Reproduction ou communication o des liers interdite sous quelque forme que ce soit sans autorisation ecrite du proprietaire. Propriete de c FCI. Droits de reproduction FCI.

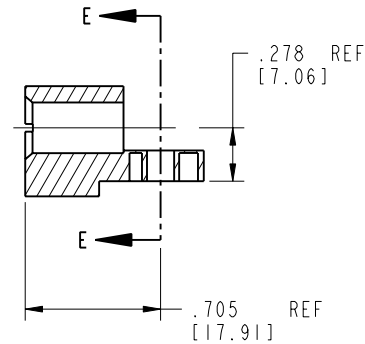
All rights strictly reserved. Reproduction or issue to third parties in any form whatever is not permitted without written authority from the proprietor. Property of FCI. Copyright FCI.

PRODUCT NUMBER

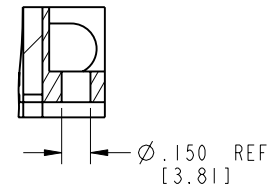
51939-040__
NOTE: (4)




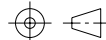
BROKEN-OUT SECTION B-B
SCALE 2:1



SECTION C-C



PARTIAL SECTION E-E

mat'l code		SEE NOTE 2		tolerances unless otherwise specified		CUSTOMER		 www.fciconnect.com	
ltr	ecn no.	dr	date	linear	.XX ± .01 / 0.X ± 0.3	projection	COPY	title	6P
C				linear	.XXX ± .005 / 0.XX ± 0.13			RIGHT ANGLE SOLDER HEADER	
				angles	.XXX ± .0020 / 0.XXX ± 0.051	INCH/MM		product family	PwrBlade
				dr	M. MOSTOLLER 1/15/03	scale		size	213
				engr	M. MOSTOLLER 1/15/03	1:1		dwg no	51939-040
				chr	H. BREWBAKER 1/15/03			sheet	2 of 4
				appd	M. MOSTOLLER 1/15/03				
sheet index	revision sheet								

cage code 22526

Pro/E

PDM: Rev:C

STATUS: Released

Printed: Aug 14, 2007

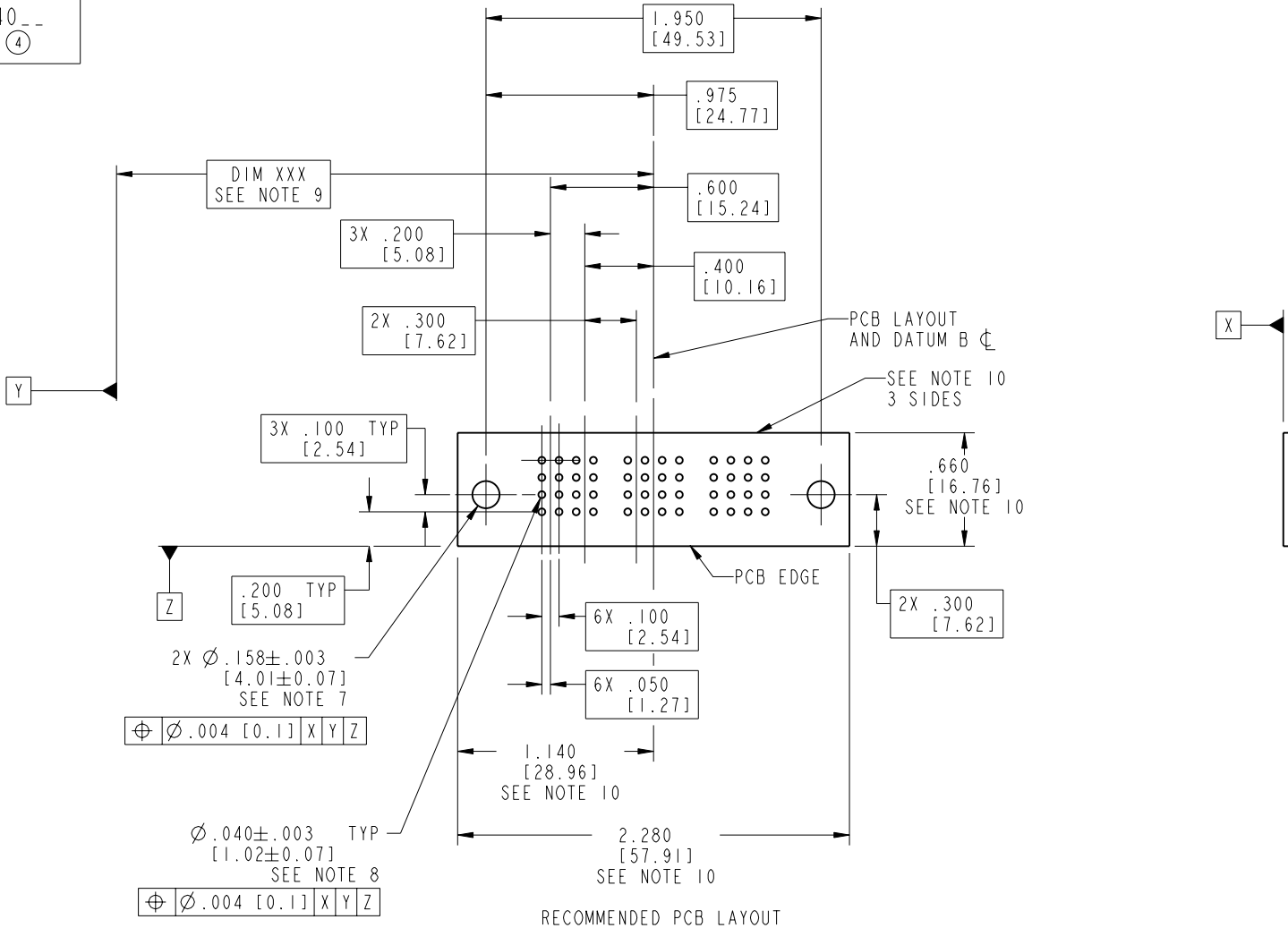
Tous droits strictement reserves. Reproduction ou communication o des liers interdite sous quelque forme que ce soit sans autorisation ecrite du proprietaire. Propriete de c FCI. Droits de reproduction FCI.

All rights strictly reserved. Reproduction or issue to third parties in any form, whatever is not permitted without written authority from the proprietor. Property of FCI. Copyright FCI.



PRODUCT NUMBER

51939-040--
NOTE: ④



mat'l code				SEE NOTE 2		tolerances unless otherwise specified		CUSTOMER		 www.fciconnect.com	
ltr	ecn no.	dr	date	linear	.XX±.01/0.XX±0.3	projection	COPY		title		
C				angles	.XXX±.005/0.XX±0.13		6P		RIGHT ANGLE SOLDER HEADER		
				dr	.XXX±.0020/0.XXX±0.051		INCH/MM		product family		code
				enrg	0°±2°	scale	1:1		PwrBlade		213
				chr					size		sheet
				appd					51939-040		3 of 4
sheet index		revision sheet									

cage code 22526

Pro/E

PDM: Rev:C

STATUS: Released

Printed: Aug 14, 2007

Tous droits strictement réservés. Reproduction ou communication o des liers interdite sous quelque forme que ce soit sans autorisation écrite du propriétaire. Propriete de c FCI. Droits de reproduction FCI.



All rights strictly reserved. Reproduction or issue to third parties in any form, whatever is not permitted without written authority from the proprietor. Property of FCI. Copyright FCI.

PRODUCT NUMBER

51939-040__
NOTE: ④

NOTES:

1. DIMENSIONS AND TOLERANCES ARE IN ACCORDANCE WITH ASME Y14.5M, 1994 UNLESS OTHERWISE SPECIFIED.

CONNECTOR NOTES:

- ② HOUSING MATERIAL: UL 94 V-0 GLASS FILLED
HIGH-TEMP THERMOPLASTIC
POWER CONTACT MATERIAL: COPPER ALLOY
SIGNAL PIN MATERIAL: COPPER ALLOY
- 3. 51939-040;51939-040LF;51939-040GLF PLATING SPEC. SEE PRINT:10064183
- ④ MANUFACTURER'S NAME, P/N, AND DATE CODE TO APPEAR ON THIS SURFACE.
- 5. PRODUCT SPECIFICATION GS-12-149.
APPLICATION SPECIFICATION BUS-20-067.
PACKAGED IN TRAYS.

PCB NOTES:

- 6. ALL HOLE DIAMETERS ARE FINISHED HOLE SIZE.
- 7. MOUNTING HOLES, WHERE APPLICABLE, ARE UNPLATED.
- ⑧ $\varnothing .0453 \pm 0.0010$ [1.151 \pm 0.025] DRILLED HOLES PLATED WITH 0.0003 [0.008] MIN SnPb OVER .001 [0.03] TO .003 [0.08] Cu PLATING TO ACHIEVE $\varnothing .040 \pm .003$ [1.02 \pm .07] HOLE.
- ⑨ "DIM XXX" TO BE DETERMINED BY THE CUSTOMER.
- ⑩ CONNECTOR KEEP-OUT ZONE.

mat'l code		SEE NOTE 2		tolerances unless otherwise specified		CUSTOMER		www.fciconnect.com	
ltr	ecn no.	dr	date	linear	.XX±.01/0.X±0.3	COPY			
C				projection	.XXX±.005/0.XX±0.13			title	6P
				angles	.XXX±.0020/0.XXX±0.051			RIGHT ANGLE SOLDER HEADER	
				dr	M. MOSTOLLER 1/15/03	INCH/MM		product family	PwrBlade
				enrg	M. MOSTOLLER 1/15/03	scale		code	213
				chr	H. BREWBAKER 1/15/03	1:1		size	dwg no
				appd	M. MOSTOLLER 1/15/03			A	51939-040
sheet index	revision sheet							sheet	4 of 4

cage code 22526

Pro/E

PDM: Rev:C

STATUS: Released

Printed: Aug 14, 2007